

PART OF THE S.E 1/4 OF SECTION 29, T.7N., R.1W., S.L.B. & M.  
COUNTRY NORTH ESTATES SUBDIVISION

LOTS 1 - 7 & 23 - 27

IN NORTH OGDEN CITY

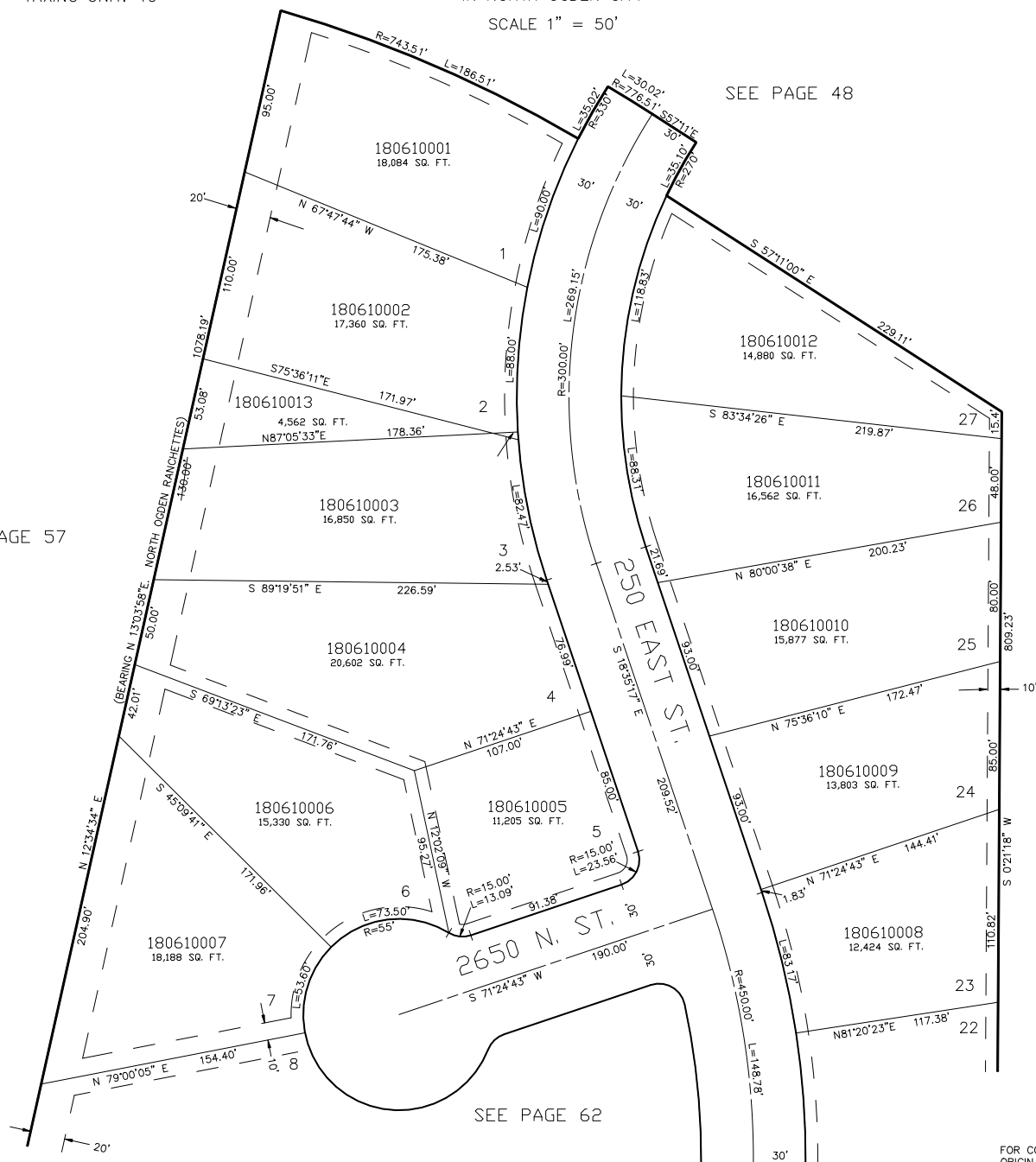
SCALE 1" = 50'

TAXING UNIT: 10

SEE PAGE 48

SEE PAGE 57

SEE PAGE 49



FOR COMPLETE ENG DATA SEE  
ORIGINAL DEDICATION PLAT IN  
BOOK 21, PAGE 67 OF RECORDS.

7' UTILITY & DRAINAGE EASEMENTS EACH  
SIDE OF PROPERTY LINES AS INDICATED  
BY DASHED LINES EXCEPT AS OTHERWISE  
SHOWN.